



MODEL 30310 RECTANGULAR SHEAR BEAM LOAD CELL

FEATURES:

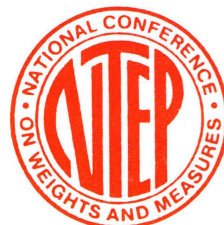
- Model 30310 threaded hole
- Model 30210 through hole
- 250 to 20K pounds capacities
- Complete environmental protection
- Stainless Steel versions available
- NTEP certified versions available for class III/IIIL 5000 divisions
- Factory Mutual (F.M.) Approved †

DESCRIPTION:

A versatile Load Cell designed for multiple use in low profile and platform scales, and in tank, bin, and hopper weighing systems. The high alloy steel construction ensures durability and precision performance. The cell is environmentally protected with waterproof seal and is nickel/chrome plated to assure resistance against corrosion. Mounting plates are also available (see accessories).

PERFORMANCE SPECIFICATIONS

| | |
|-----------------------------------|--|
| Standard Capacities (lbs): | * 250, *500, 1K, 2K, 2.5K, 3K, 4K, 5K, 5KLE, 10K, 15K, 20K |
| Excitation Voltage: | 10VDC - Maximum 15VDC |
| Rated Output: | 3.0 mv/v + .25% |
| Non-Linearity: | < 0.03% FSO (Full Scale Output) |
| Hysteresis: | < 0.02% FSO |
| Non-Repeatability: | < 0.01% FSO |
| Zero Balance: | ± 1.0% FSO |
| Bridge Resistance: | 350 ± 3.5 ohms |
| Safe Overload: | 150% of Rated Capacity |
| Temperature: | |
| Compensated Range: | 0 - 150 deg. F |
| Effect on Output: | < 0.0008% FSO/deg. F |
| Effect on Zero: | < 0.0011% FSO/deg. F |
| Finish: | Electroless Nickel/ChromePlated |
| * Bending Beam | |



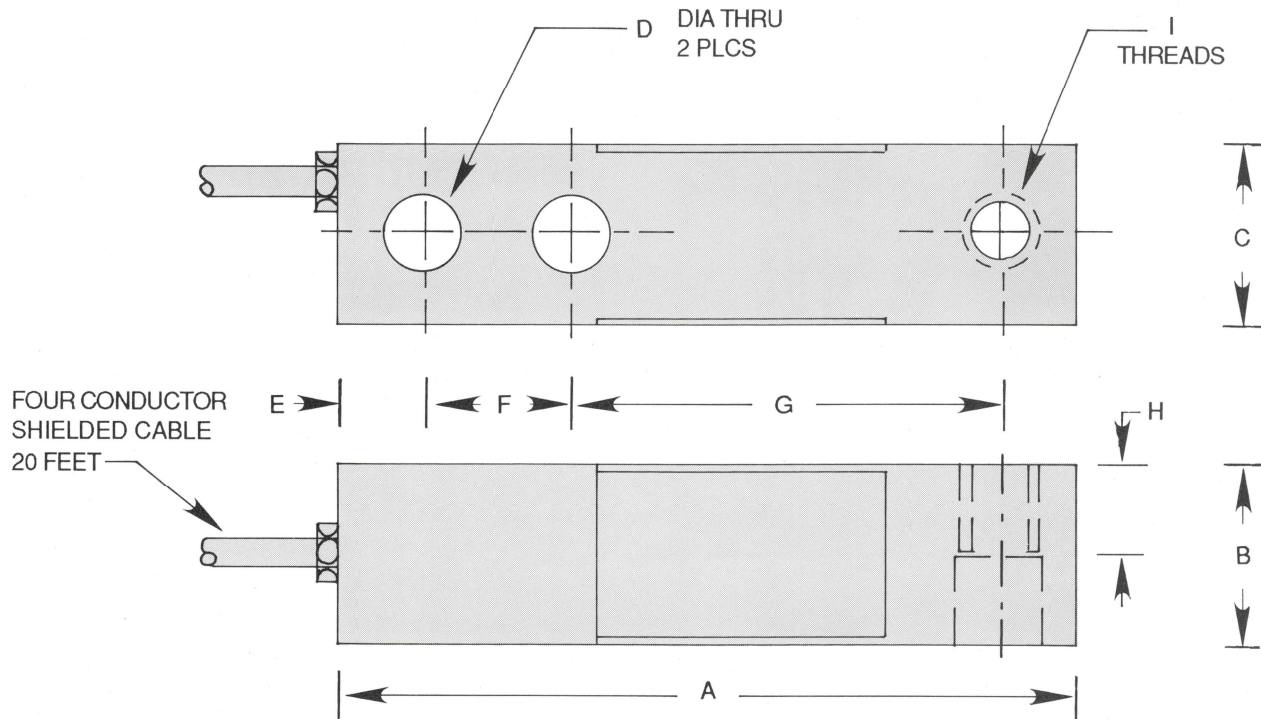
| CAPACITY LBS. | PART NO. | A | B | C | D | E | F | G | H | I |
|---------------|------------|------|------|------|------|------|------|------|------|-------------------|
| 250 - 5K | 30310 - XX | 5.12 | 1.25 | 1.25 | .53 | .60 | 1.00 | 3.00 | .60 | 1/2 - 20 UNF - 2B |
| 5KLE - 10K | 30310 - XX | 6.75 | 1.50 | 1.50 | .78 | .75 | 1.50 | 3.75 | .75 | 3/4 - 16 UNF - 2B |
| 15K - 20K | 30310 - XX | 8.75 | 2.00 | 2.00 | 1.03 | 1.00 | 2.00 | 4.75 | 1.00 | 1 - 14 UNF - 2B |

ELECTRICAL TERMINATION

| | | |
|-----------|-----------|--------|
| Input | Output | Shield |
| Red (+) | Green (+) | |
| Black (-) | White (-) | |

COMPRESSION POSITIVE

NOTE: If ordering this cell for use with WM-I mount specify 30210-XX CBM



† Factory Mutual Systems approved as intrinsically safe when installed per F.M. approved installation drawing. Contact ARTECH sales department for details.

ORDER INFORMATION:

ARTECH is dedicated to maintaining adequate inventories of its Load Cells to provide the best service in the industry.

Order by the model number and indicate the capacity required.

Custom services such as matched load cell outputs, special threading and custom calibrations are available on an optional basis at an extra cost. LET US KNOW WHAT YOU NEED...WE LISTEN!

Represented by:

ARTECH
INDUSTRIES INC.

1966 Keats Drive, Riverside, CA 92501
(951) 276-3331
(800) 654-8181
Fax: (951) 276-4556
Email: info@artechindustriesinc.com
www.artechindustriesinc.com

QUALITY • PERFORMANCE • SERVICE
"A PREFERRED NAME IN LOAD CELL TECHNOLOGY"